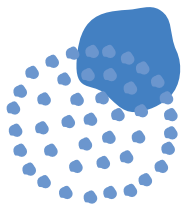
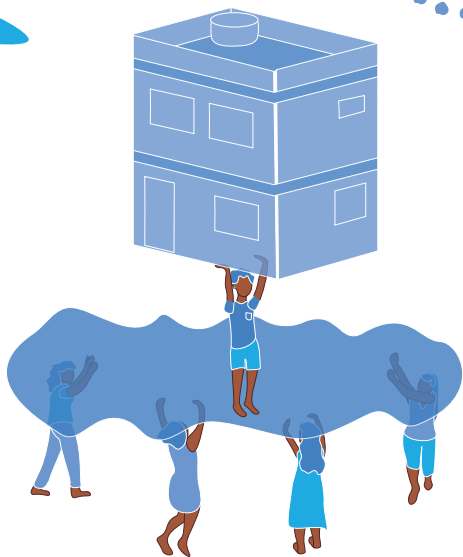


1

### WHAT IS A FAVELA COMMUNITY LAND TRUST?

It is a model of land regularization for informal settlements that provides for both collective land management and residents' individual freedom. Its main feature is the separation of land ownership from that of buildings: the land belongs to the community as a whole, while the buildings belong to residents themselves. The main objective is to ensure the community's tenure security while also strengthening the community's ability to realize development improvements. It ensures affordable housing on a permanent basis.



WANT TO KNOW MORE? VISIT:



[www.termoterritorialcoletivo.org](http://www.termoterritorialcoletivo.org)  
[facebook.com/termoterritorialcoletivo](https://facebook.com/termoterritorialcoletivo)

CONTACT US:

[ttc@comcat.org](mailto:ttc@comcat.org)  
+55-21-99835-0613

A PROJECT OF:

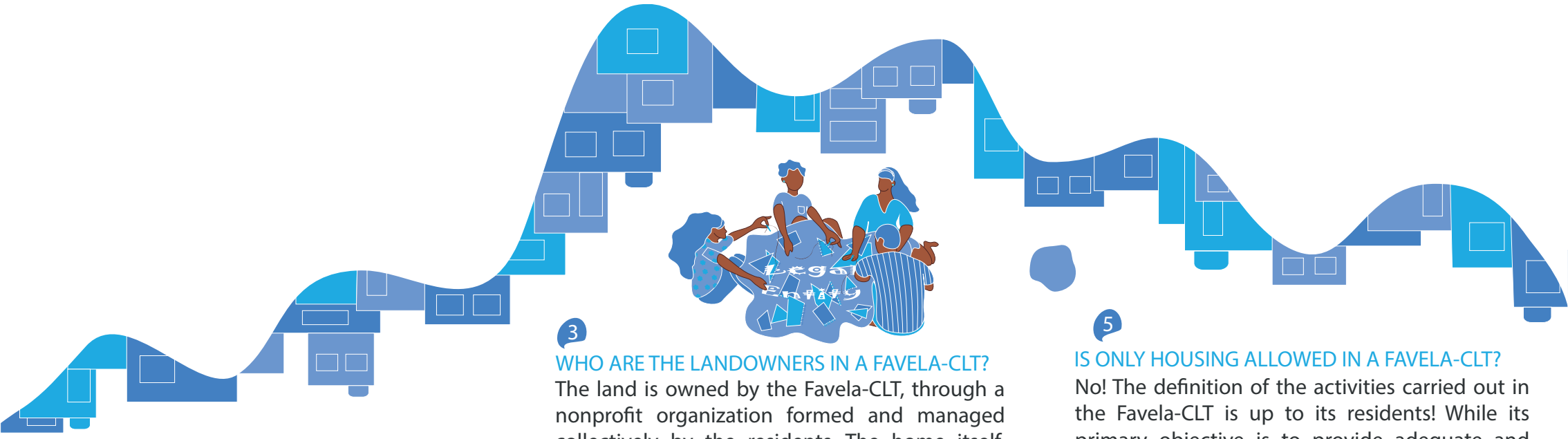


INSTITUTIONAL SUPPORT:



# FAVELA COMMUNITY LAND TRUST





2

### WHAT PURPOSE DOES THE FAVELA-CLT SERVE?

The Favela-CLT empowers the community by guaranteeing that residents can remain on their land, having their right to adequate housing met on a permanent basis. It seeks to strengthen the community and its ability to make infrastructure improvements through collective land management, since land now belongs to everyone. It dramatically reduces both the risk of forced evictions and of gentrification.

3

### WHO ARE THE LANDOWNERS IN A FAVELA-CLT?

The land is owned by the Favela-CLT, through a nonprofit organization formed and managed collectively by the residents. The home itself, improvements made to it, as well as the backyards, belong to the residents through formal and registered titling. In this way, when they legally become the owners of their homes, residents have the right to use them as they see fit, being able to sell, rent, inherit or pass on to family members.

4

### WHO MAKES UP THE FAVELA-CLT?

The Favela-CLT is made up of the residents themselves. Together they create a legal entity that will own the land, which is collectively managed. To do so, a board of directors is formed whose composition is determined by residents, and that may include as members:

- Residents;
- Technical allies responsible for providing assistance to the Favela-CLT;
- Other parties considered important by the residents.

Regardless of whether or not they participate in this entity, all residents are members of the Favela-CLT and have the right to define its land management goals.

5

### IS ONLY HOUSING ALLOWED IN A FAVELA-CLT?

No! The definition of the activities carried out in the Favela-CLT is up to its residents! While its primary objective is to provide adequate and affordable housing, the Favela-CLT also aims to ensure broader community development. In this sense, there may be other uses for the Favela-CLT land that are of interest to the local community, such as:

- Schools;
- Health facilities;
- Workplaces;
- Leisure areas;
- Community gardens; and
- Shops.

6

### WHO IS ALLOWED TO PARTICIPATE?

Any resident of the original informal settlement who wishes to! Entry is voluntary and no resident of an original settlement is forced to join the Favela-CLT. However, the more people do join, the stronger and more legitimate the new CLT becomes in its quest to pressure public or private agencies to provide basic services such as water, electricity, etc.

